



DATA & APPLICATIONS ONLINE

TerraViva! SEDAC Viewer 2011 Release

Overview

This free-of-charge map viewer and analytical tool uses a powerful data-viewing engine and spatial analysis tools to enable the visualization and integration of hundreds of socioeconomic and environmental variables and layers, including a range of satellite-based data.

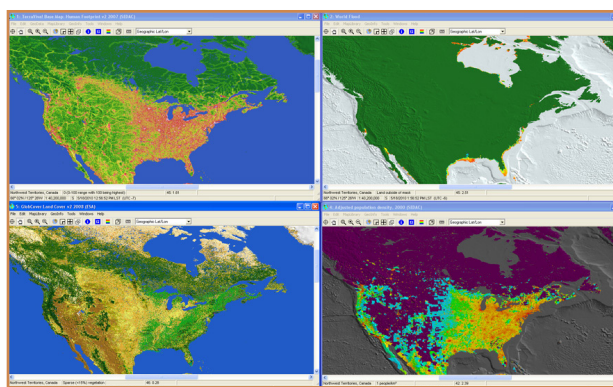
The *TerraViva!* SEDAC Viewer is great for teaching. It's of primary interest to researchers, analysts, and educators working in a range of areas from environmental and ecological sciences to the social and health sciences.

Data

The 2011 version adds several SEDAC data sets, including Anthropogenic Biomes, Global Crop and Pasture Lands, and Global Reservoirs and Dams. The map library includes selected SEDAC gridded population and poverty data sets plus data on climate, hydrological, and other biophysical variables. This release features many SEDAC indicator collections with hundreds of variables. Other features include scatter plots, tabular data display, map image production, overlay analysis, mask creation, and Web-based download of additional data layers. To request a DVD or to learn more, go to <http://sedac.ciesin.columbia.edu/tv/>.

System Requirements

TerraViva! is a registered trademark of ISciences, LLC. The *TerraViva!* SEDAC Viewer is designed for use with Microsoft Windows 98, 2000, XP, Vista, or NT 4.0 with Service Pack 3 or later.



Product Features

- Map data and GIS functions in one package
- Map library organized by theme: human impacts, land cover, natural hazards, and many others
- Country-level indicators with thousands of variables
- Capable of creating dynamic color-coded maps for quick country comparison, and customizable maps and charts
- 15 different map projections
- Gazetteer geographic locator can pinpoint cities, states, provinces, countries, water bodies, and weather stations

To learn more or to request a DVD,
go to <http://sedac.ciesin.columbia.edu/tv/>

